



Safety-oriented incremental rotary encoder

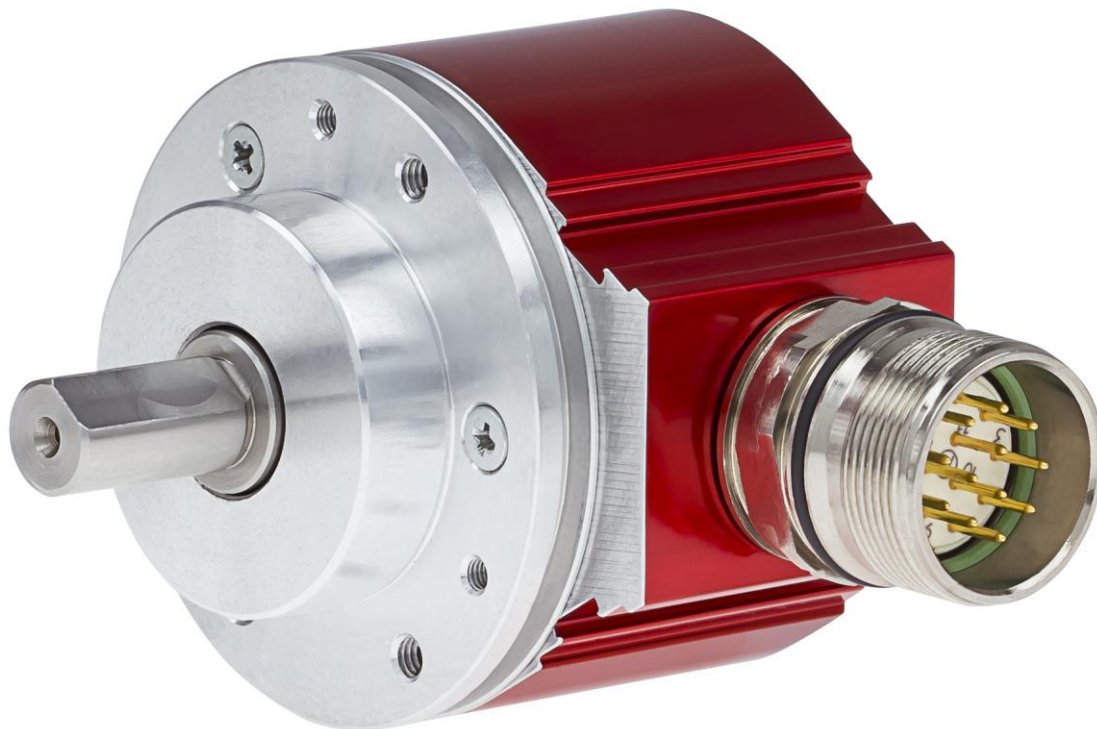
The solution doesn't always have to be complicated. An incremental rotary encoder is just the ticket for the safe detection of speed, direction of rotation or stationary monitoring. The use of certified components makes us your one stop shop for complex application solutions. We offer the safety-certified incremental rotary encoder IE58+FS (Functional Safety). The user can choose between square-wave signals (with TTL or HTL level) and sine-cosine interface. The rotary encoder is certified for applications with SIL 2 or PLd requirements. The rotary encoder allows for the operating modes SLS, SOS SSR, SDI and SSM in conjunction with an appropriate safety module. With a sine-cosine interface, SIL3 or PLe our products are ideal for specific safety functions. This enables the transmission channel to be checked by means of a simple calculation. For the signal, the following must apply at all times: $\sin^2(t) + \cos^2(t) = 1$. If the calculated value differs, the safety module can go into a safe status. Another component of this highly effective safety classification is the simple design. It has a proven optical scanning system with fixed resolution on a glass disk. Various options of 1024, 2048 and 4096 periods per revolution plus a zero pulse may be selected. The signal paths are designed differentially. As a result, the signal is immune to disturbance and failure of a driver can be reliably detected. The incremental rotary encoder is connected to the driving axis either with a solid shaft, blind shaft (IS58+FS) or a hollow shaft (IH58+FS). To fulfill the certified safety functions, the safety-oriented incremental rotary encoder IE58+FS is connected to a safety module, which then performs the relevant inspection. For the development and certification of the IE58+FS, modules from different manufacturers have been integrated and tested with the IE58+FS. The IE58+FS supplements the series of safety-oriented products with integrated safety (CD_75) with an important component for a modular safety concept, allowing the user to select the required evaluation module according to his or her requirements.

www.tr-electronic.com/s/S010996

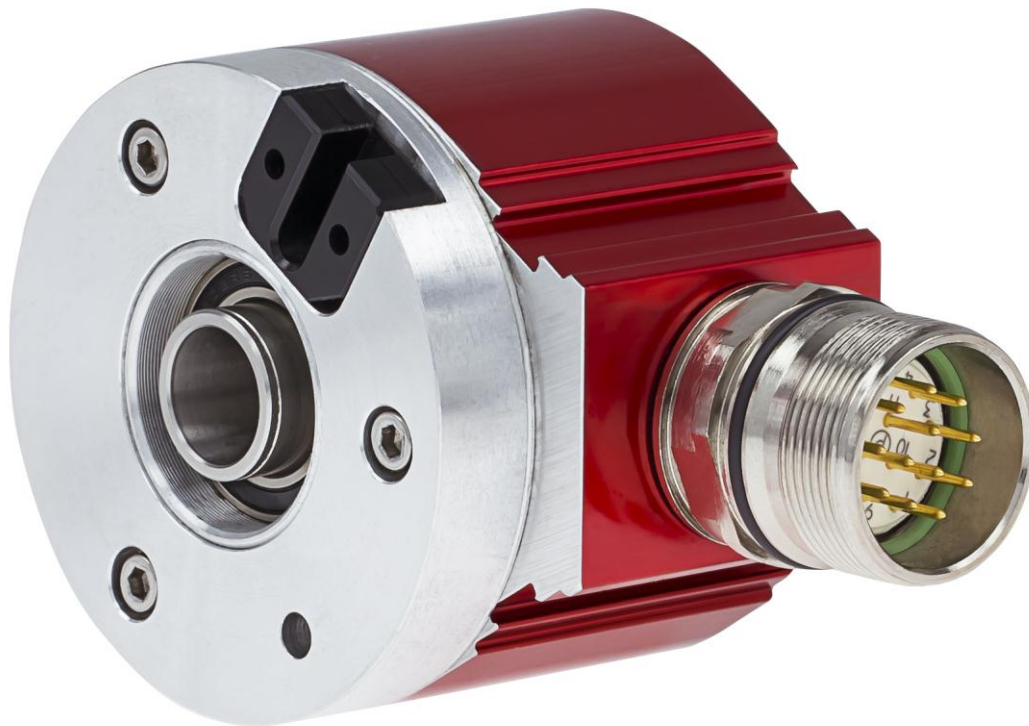
Read more:

<http://www.tr-electronic.com/news/news.html>

TR-Electronic GmbH, 1.11.2015



TR-Electronic – IE58+FS.jpg



TR-Electronic – IH58+FS.jpg

(c) TR-Electronic GmbH 2015