

Single or twice as flexible: Pulleys for wire-actuated encoders from TR-Electronic

Single or double pulleys from TR-Electronic's allow the exit angle of the wire to be increased to up to 135° on wire-actuated encoders, also significantly increasing flexibility in application.

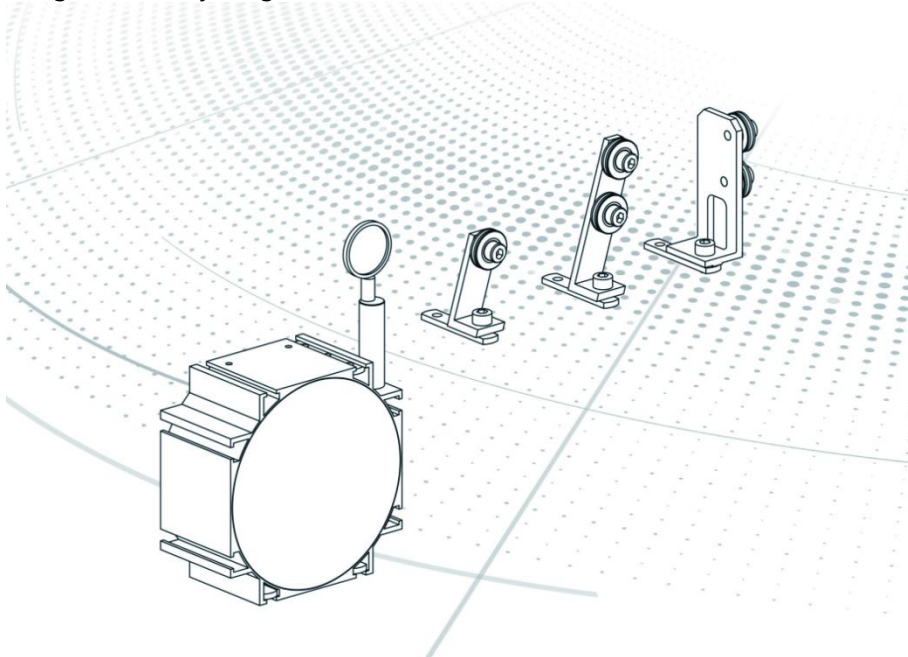
Wire-actuated encoders from TR-Electronic are the universally applicable, efficient and safe solution for recording linear movements in the warehousing and logistics sector, for example, as well as in stage technology and many other applications. Their fundamental advantage lies in the particularly compact installation space: The wire on the measuring drum is only unwound when movement takes place, while the measuring range remains free until unwinding.

The stumbling block with standard wire-actuated encoders is the narrow tolerance of the wire exit due to the small exit angle of just $\pm 3^\circ$. With the pulleys from TR Electronic, however, the possible unwinding angle range is increased from just 6° to an enormous 135° . While the single pulleys enable an exit angle of 0° - 105° , this is actually increased to 135° by double pulleys.

Depending on the arrangement of the pulleys, the unwinding angle range can also be in line with the installed wire-actuated encoder or at a 90° angle. With pulleys from TR Electronic, the wire-actuated encoder can also be mounted with the exit opening at the bottom with horizontal unwinding or horizontal exit with unwinding at the top. In this way water drops on the wire are diverted by the pulleys and the wire-actuated encoder is optimally protected against the penetration of water and adverse environmental conditions.

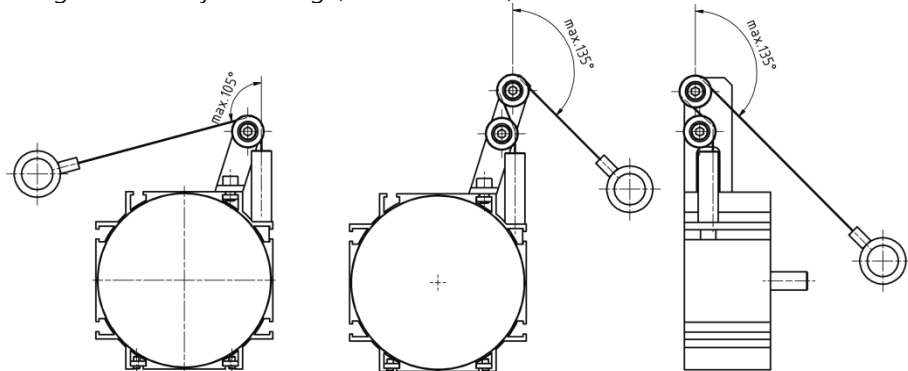
Single or double pulleys from TR Electronic are available to order as an option for wire-actuated encoders in the standard range with housing size 115 mm.

Image file Pulley diagram (TR-Electronic)



Pulleys for wire-actuated encoder

Image file Pulley drawing (TR-Electronic)



Three problem-solvers for larger wire unwinding angles

Further information:

Installation manual for pulleys: www.tr-electronic.de/f/TR-ECE-TI-DGB-0254

Wire-actuated encoders, which are available with this option: www.tr-electronic.com/s/S007054